



## Leica DISTO™ transfer

How to connect your Leica DISTO™ to your PC

- when it has to be **right**

**Leica**  
Geosystems



PC, Labtop

 **Bluetooth®**



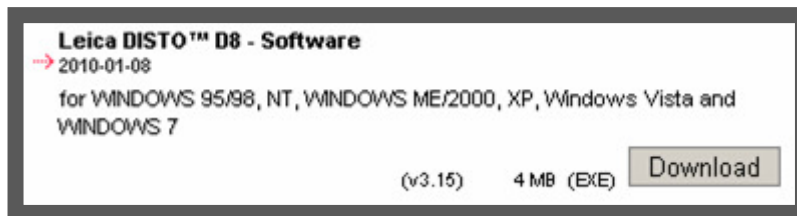
Tablet PC, UMPC

# Leica DISTO™ transfer

## How to install

1. If you have access to the internet please download the latest version of Leica DISTO™ transfer software

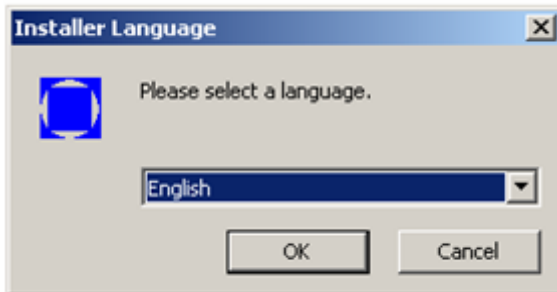
[http://ptd.leica-geosystems.com/en/Support-Downloads\\_6598.htm?cid=11104](http://ptd.leica-geosystems.com/en/Support-Downloads_6598.htm?cid=11104)



# Leica DISTO™ transfer

## How to install

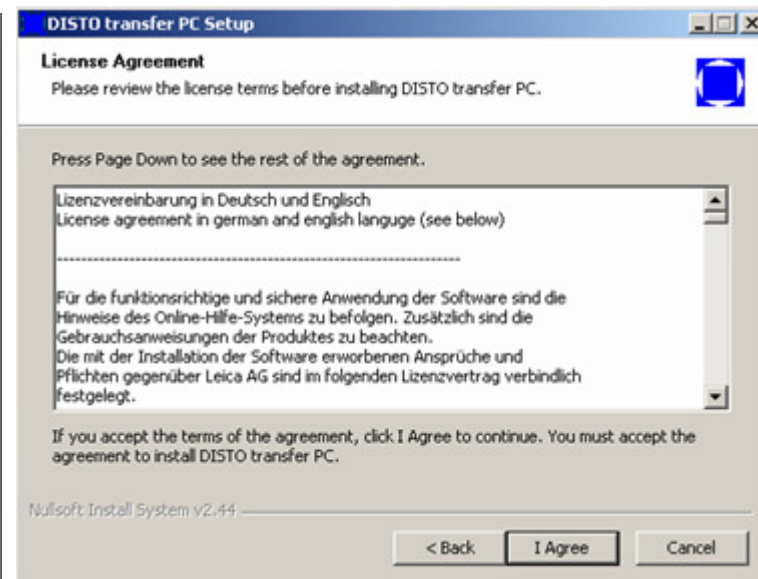
2. Start the downloaded software „SetupDISTO3.exe“
3. You will be asked for the language for the installer program (not for the Leica DISTO™ transfer software)



# Leica DISTO™ transfer

## How to install

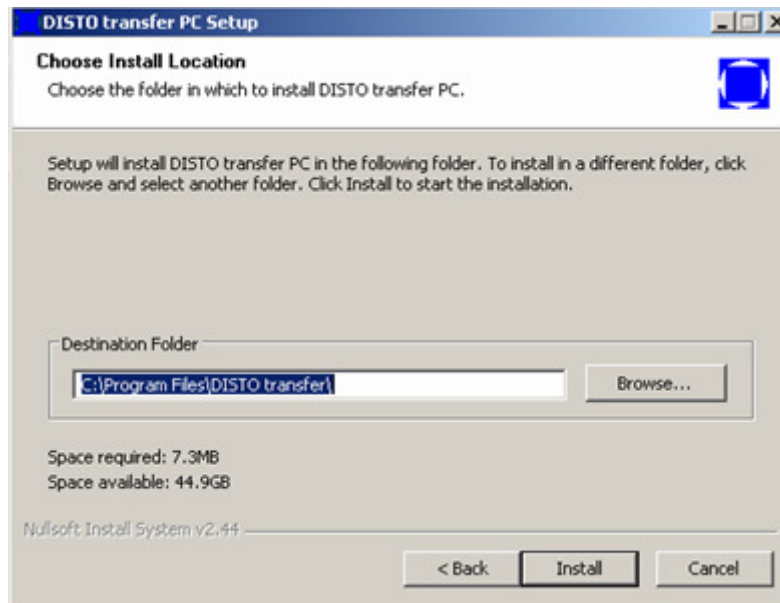
4. Information appears that you will be guided by a installation wizzard.
5. You have to agree to the license agreement



# Leica DISTO™ transfer

## How to install

6. Please choose the location where the software should be installed. Just click okay if you don't want to have a specific place for the program.



# Leica DISTO™ transfer

## How to install

7. Please wait till installation process took place and following window appears



8. If you leave the tick on this window and click next you will be asked for the language of your Leica DISTO™ transfer program. This setting can be changed later as well by starting the program „DISTO transfer PC Sprache language“ in the program folder „DISTO transfer PC“

# Leica DISTO™ transfer

## How to install

9. The Plugin for Autocad® and Bricscad are installed automatically if such installation has been detected during the Leica DISTO™ transfer start. So you have to start the Leica DISTO™ transfer software once manually so it can detect the CAD software and place the necessary registrations. Please note that the Plugin only works with AutoCAD versions later than 2004 and Bricscad versions later than 9.3.5



# Leica DISTO™ transfer

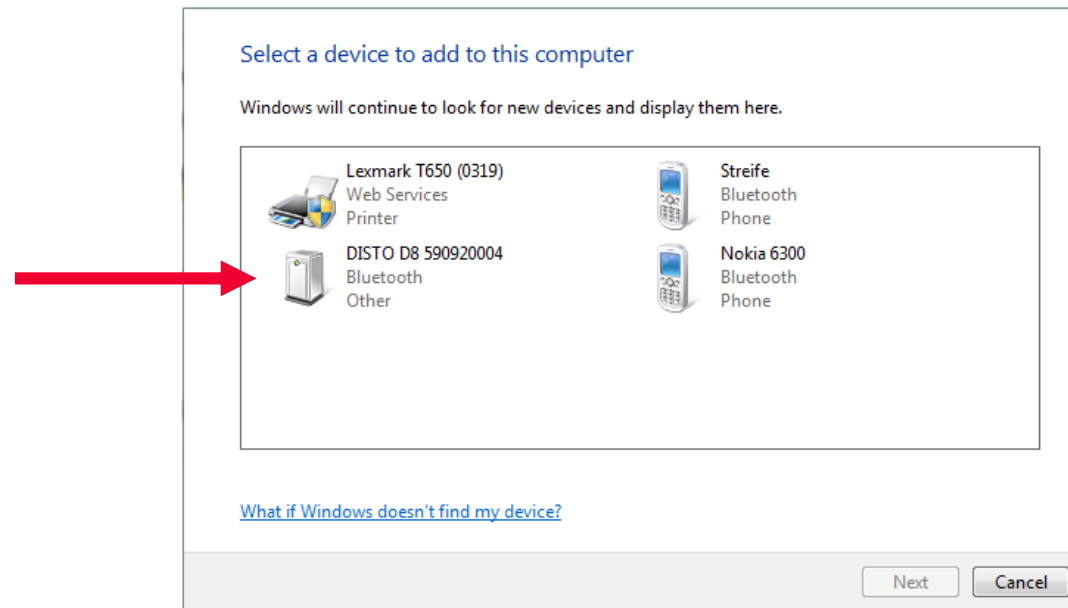
## Pairing the DISTO device with Windows 7

1. Before you start the DISTO™ transfer program you have to pair the Leica DISTO™ with your computer. In order to do this please start the program “Devices and Printers” in your Start menu.
2. Make sure that the Bluetooth hardware on your PC is enabled
3. Choose „Add a Device“

# Leica DISTO™ transfer

## Pairing the DISTO device with Windows 7

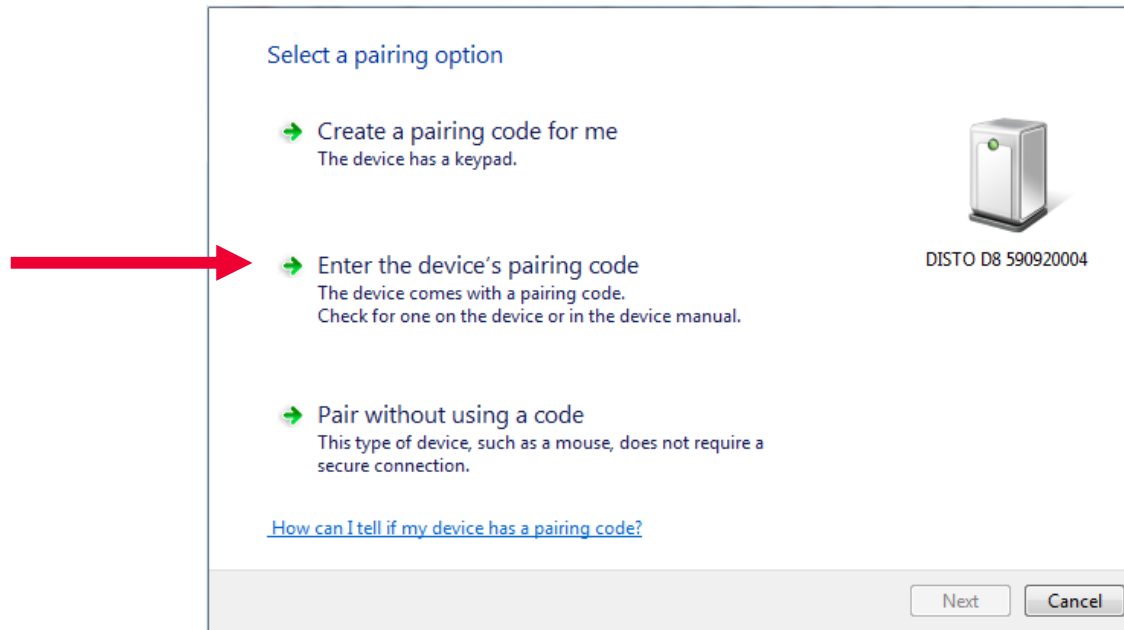
4. After a few seconds all Bluetooth devices in accessible area will be displayed. Please select your DISTO™ and double click on it.



# Leica DISTO™ transfer

## Pairing the DISTO device with Windows 7

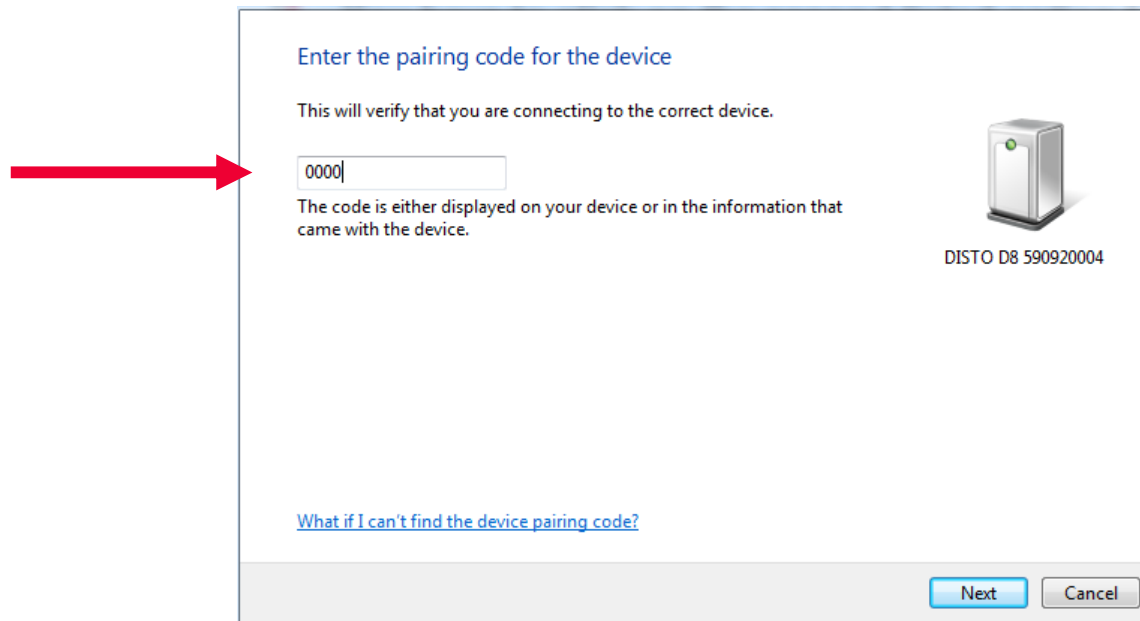
5. You will be asked for the pairing option. You have to click on the second listed option for “Enter the device’s pairing code.



# Leica DISTO™ transfer

## Pairing the DISTO device with Windows 7

5. You have now to enter the pairing code which is always „0000“.



6. The instrument will be shown as being paired in the list of devices

## Leica DISTO™ transfer

### Start the program Leica DISTO™ transfer PC

1. Make sure that the Bluetooth hardware on your PC is activated
2. Switch on your Leica DISTO™ and press the Bluetooth button to activate the Bluetooth hardware. The Bluetooth logo on the Leica DISTO™ display starts blinking respectively appears in grey to show that it is active.



## Leica DISTO™ transfer

### Start the program Leica DISTO™ transfer PC

3. Click the program icon for Leica DISTO™ transfer PC in the program folder „DISTO transfer PC“ or on the Desktop.



4. Following picture will appear on the screen to show that the program is in progress.



## Leica DISTO™ transfer

### Start the program Leica DISTO™ transfer PC

5. After some seconds following window will appear and list all found Leica DISTO™ devices with active Bluetooth. This window does not appear if you are reconnecting after a once successfully established connection.

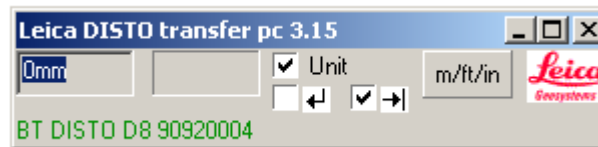


6. Select your Leica DISTO™ from the list and press OK

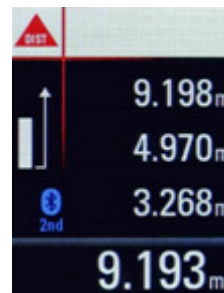
## Leica DISTO™ transfer

### Start the program Leica DISTO™ transfer PC

#### 7. The Leica DISTO™ transfer starts



#### 8. The Bluetooth symbol on the screen of the Leica DISTO™ appears durable respectively turns blue





# Leica DISTO™ transfer

## Using the program Leica DISTO™ transfer PC

### 1. Following settings can be made

Convert meter to mm or cm

Covert format for Feet/Inches

Transferred Distance

Transferred Inclination

Activate Units

Open Window for units details

This shows type and serial number of connected instrument

Double click to enter user name at Start screen of Leica DISTO™ D8

Transfer „Return“ after values  
→ e.g. in Excel jump down

Transfer „Tabulator“ after values  
→ e.g. in Excel jump right

**Data Format**

Metric Measurements

- Original values
- Convert in [mm]
- Convert in [cm]
- Convert in [m]

Feet Inch Format

10 01 1/1

10 01 1/1

10 01

10 01 1/1

OK

**Leica DISTO transfer pc 3.15**

0mm

Unit

m/ft/in

Leica Geosystems

BT DISTO D8 90920004

**Personalise your Leica DISTO**

Please enter the Leica DISTO power on welcome message.

Cancel OK

# Leica DISTO™ transfer

## Using the program Leica DISTO™ transfer PC

2. Start the program where you want to transfer the measurements from your Leica DISTO™ to

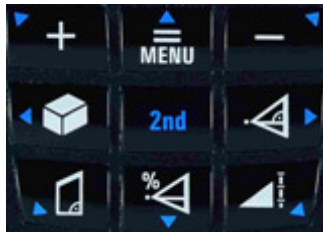
The screenshot displays the Leica DISTO transfer PC 3.15 software interface. The main window shows a 3D wireframe model of a building structure. A red arrow points from the 'BT DISTO D8 90920004' device ID in the software to the 'diagonal 1' column in the Excel spreadsheet. Another red arrow points from the software to a list of measurements: 3.518m, 3.286m, 3.289m, and 38.024m<sup>3</sup>. The Excel spreadsheet contains the following data:

	height	width	diagonal 1	diagonal 2
Living Room				
window 1	1.366m	2.884m		
window 2				
window 3				
window 4				
window 5				
Bath Room				
window 1				
window 2				
Kitchen				
window 1				
window 2				

# Leica DISTO™ transfer

## Using the program Leica DISTO™ transfer PC

3. Press „2nd“ key on the Leica DISTO™ and use the arrow keys in order to move within an application (e.g. navigate to different cells in Excel)










The screenshot shows a Microsoft Excel window titled 'Microsoft Excel - Book1'. The spreadsheet contains a table with the following data:

	A	B	C	D	E
7	Hauptstrasse 3				
8	1st Floor				
9	Living Room				
10		height	width	diagonal 1	diagonal 2
11	window 1	1.366m	2.8		
12	window 2				
13	window 3				
14	window 4				
15	window 5				
16					
17					
18					
19	Bath Room				
20		height	width	diagonal 1	diagonal 2
21	window 1				
22	window 2				
23					
24					
25					
26	Kitchen				
27		height	width	diagonal 1	diagonal 2
28	window 1				
29	window 2				
30					

Red arrows are overlaid on the spreadsheet to indicate navigation directions: a central arrow pointing up from row 10, a central arrow pointing down to row 15, a central arrow pointing left from column D, and a central arrow pointing right to column E. Additional arrows point from the center towards the corners of the grid.

# Leica DISTO™ transfer

## Using the program Leica DISTO™ transfer PC

4. In any function the **value in the main line (main result)** will be transferred
5. In the angle tracking function (press 1x)  **the angle and distance** will be automatically transferred
6. To transfer **all values in a function** press and hold the  key for 2 Sec. All values will be **underlined with a blue line**. Transfer the data by pressing the  key
7. To select a value (also out of the History) press and hold the  key for 2 Sec. Afterwards press the  or the  key to select a value. (The selected value will be underlined in blue). The value will be transferred by pressing the  key.

## Leica DISTO™ transfer

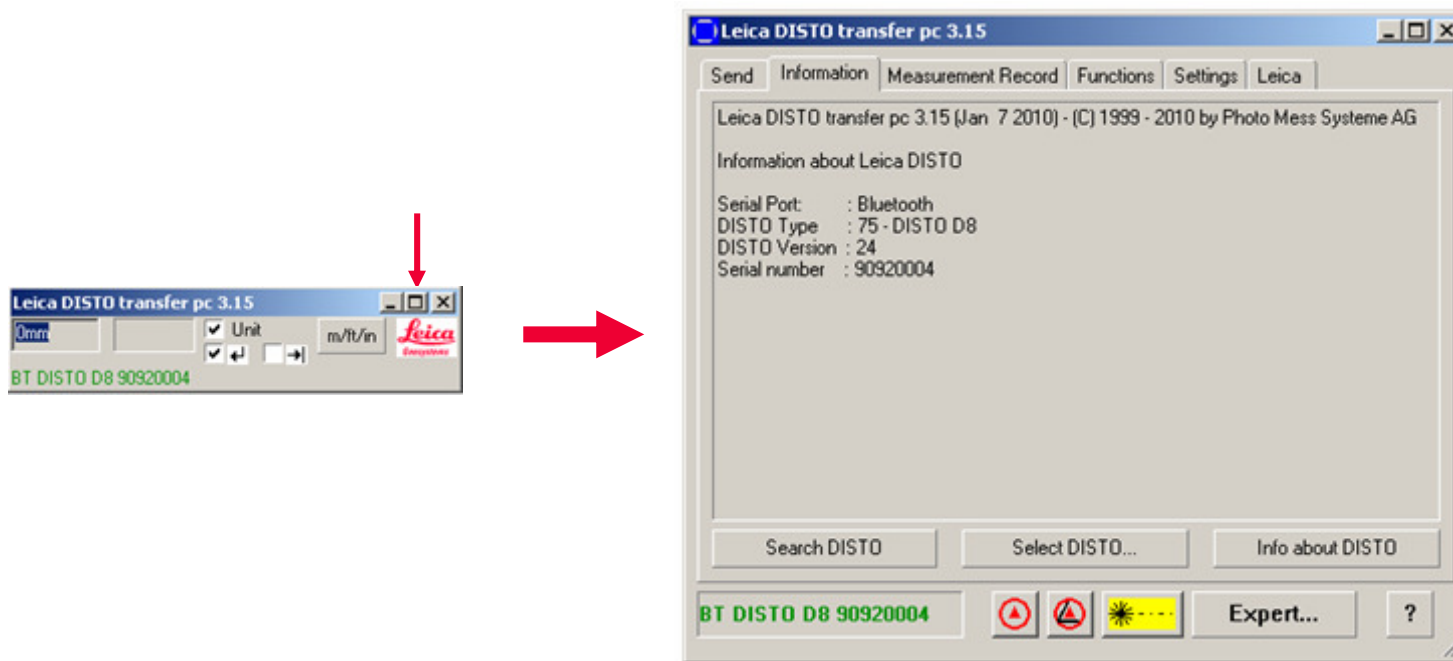
### Using the CAD Plugin for Autocad® and Bricscad

- 1.** To start the Plugin for Autocad® and Bricscad you have to start the corresponding CAD software and write the command „leicadisto“ in the command field. If Leica DISTO™ transfer is not already open it will be opened now automatically.
- 2.** Click in the drawing area and start transferring distances. If you transfer distance and inclination the horizontal distance will be calculated and used in drawings.
- 3.** If the inclination is more than 75° it will be interpreted as a vertical distance and used as a height. Only one height can be entered per layout (change to 3D view to see the three dimensional drawing).
- 4.** The arrow keys on the Leica DISTO™ (press 2nd for usage) can be used to select drawing direction.

# Leica DISTO™ transfer

## Advanced functionality of Leica DISTO™ transfer

- For further functionality for the Leica DISTO™ transfer program you can press the “Maximize” button of the program window



Remote Measure Distance  
Remote Measure Distance and Inclination  
Remote Switch on laser

- when it has to be right

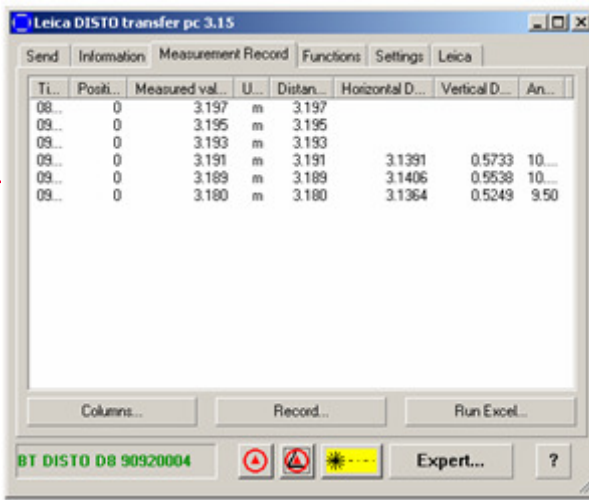


# Leica DISTO™ transfer

## Advanced functionality of Leica DISTO™ transfer

- Following important functions you can find in this mode
- To close this advanced mode press „Minimize“ window button

Window for Measurement results



Ti...	Posi...	Measured val...	U...	Distan...	Horizontal D...	Vertical D...	An...
08...	0	3.197	m	3.197			
09...	0	3.195	m	3.195			
09...	0	3.193	m	3.193			
09...	0	3.191	m	3.191	3.1391	0.5733	10...
09...	0	3.189	m	3.189	3.1406	0.5538	10...
09...	0	3.180	m	3.180	3.1364	0.5249	9.50

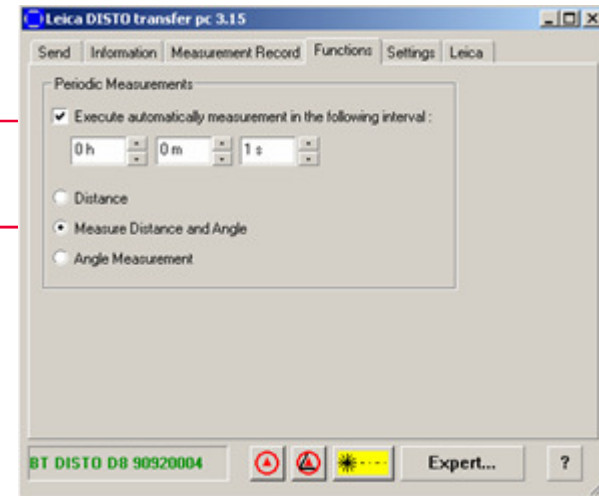
Buttons: Columns..., Record..., Run Excel...

BT DISTO D8 90920004

Choose content for columnes | Save or open or print the columnes | Export results to Excel

Select interval for continuous measurements

Select what should be measured



Periodic Measurements

Execute automatically measurement in the following interval:

0 h 0 m 1 s

Distance

Measure Distance and Angle

Angle Measurement

BT DISTO D8 90920004

# Leica DISTO™ transfer

## Troubleshooting with the Bluetooth driver

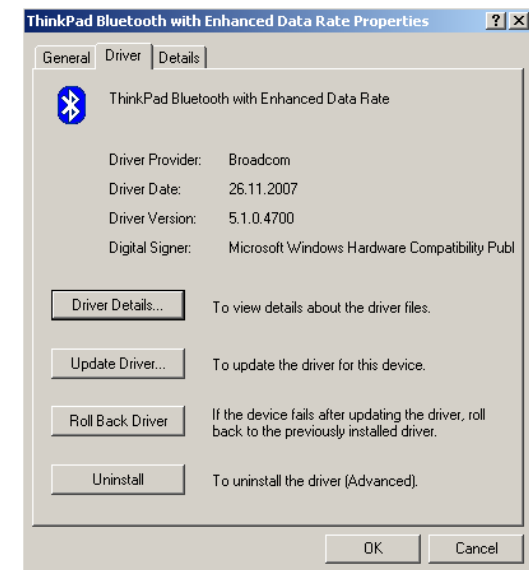
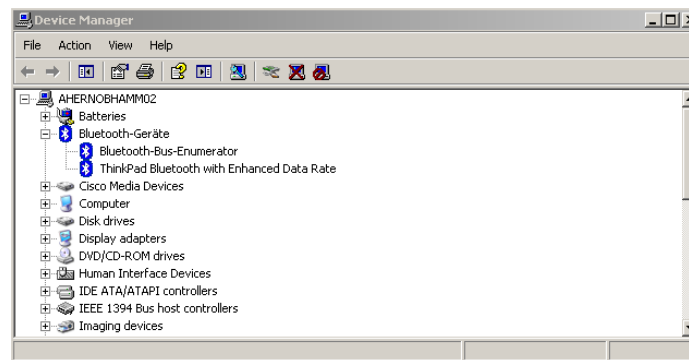
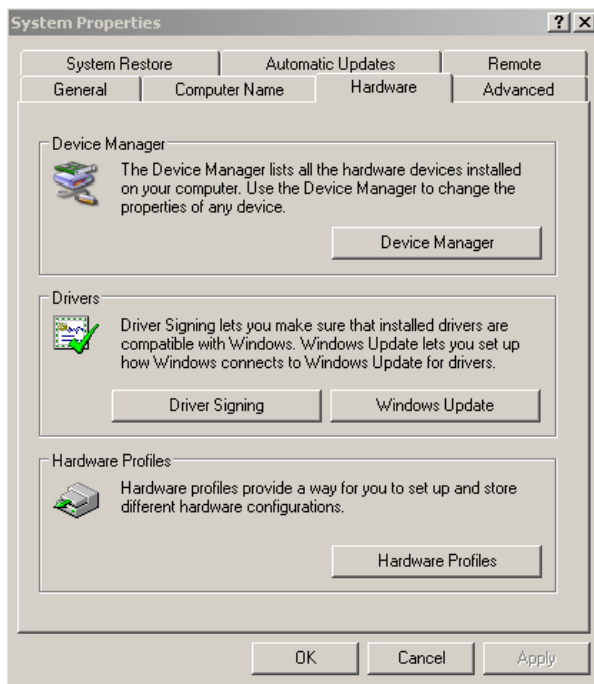
- Make sure the Bluetooth hardware is activated on your computer respectively the dongle is plugged in. If you are using an external Bluetooth dongle you have to install a Bluetooth Stack/Driver first. In order to do this please do not install the driver that comes with the dongle but please plug in the dongle and boot your computer. After the new hardware has been detected by windows operating system please choose to install the standard driver (recommended one = Microsoft).
- To connect a Bluetooth hardware with a PC a Bluetooth stack (driver) must be installed on your computer. There are many different drivers existing. The most common ones are from Microsoft and Broadcom (driver is called Widcomm).
- Leica DISTO™ transfer supports stacks from following companies:
  - Microsoft (comes with the Windows operating system)
  - Broadcom (Widcomm driver)



# Leica DISTO™ transfer

## Troubleshooting with the Bluetooth driver

- In order to know which stack is used on the PC you have to look  
→ Control Panel → System → Device Manager → Bluetooth (double click)



# Leica DISTO™ transfer

## Troubleshooting with the Bluetooth driver

- **What effects can be if another driver is used?**
  - Leica DISTO™ does not connect
  - A connection always drops after a certain period of time
  - Values are not transferred in a usable form

# Leica DISTO™ transfer

## Troubleshooting with the Bluetooth driver

- **Solution 1:**
  - Some drivers request from the user to enter an access code before establishing the first connection. So please check whether there is a Bluetooth icon in the Task line below (Notification area) which you have to double click in order to enter this code. Please enter the code „0000“. Sometimes the Bluetooth logo appears green/blue if you have to enter this code.

# Leica DISTO™ transfer

## Troubleshooting with the Bluetooth driver

- **Solution 2:**

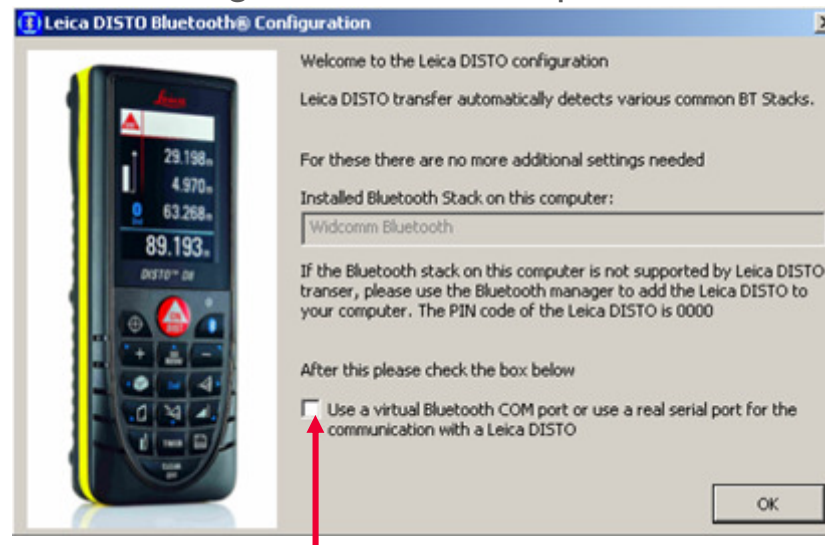
- Leica DISTO™ transfer is programmed to access the Bluetooth modul of the PC directly. If this is not possible you can change to a mode where a virtual COM port is supported.
- Click the program icon for „DISTO transfer PC Bluetooth Install“ in the program folder „DISTO transfer PC“ or on the Desktop.



# Leica DISTO™ transfer

## Troubleshooting with the Bluetooth driver

- Solution 2 (cont.):
  - Check the field for using the virtual COM port



- Start the Bluetooth Manager and pair the DISTO™ with your computer. Probably you have to enter a code which is „0000“
- Start the Leica DISTO™ transfer again. The program window will immediately appear and the different COM-ports will be polled until the Leica DISTO™ is found.

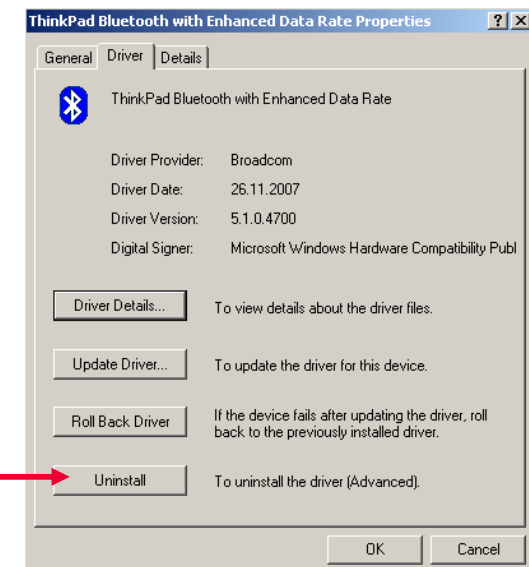
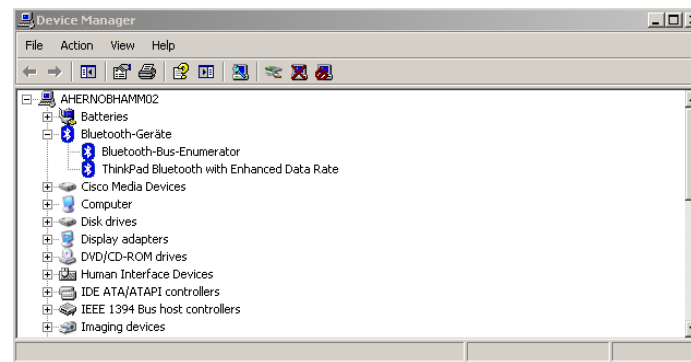
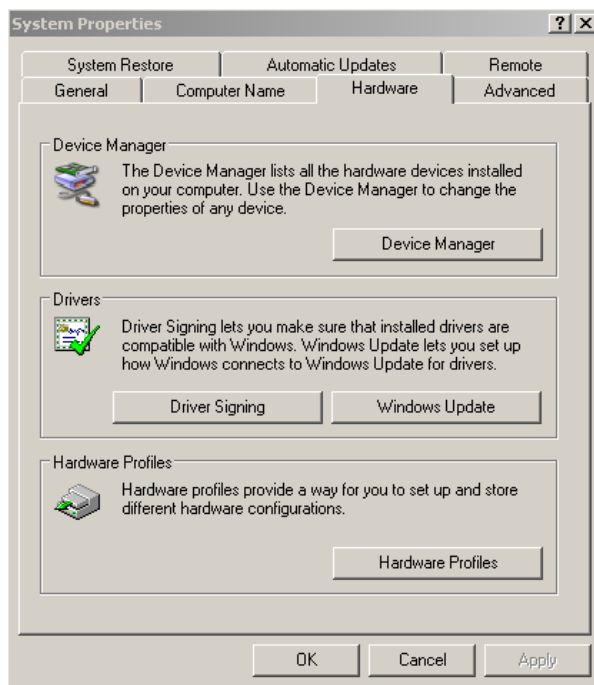
# Leica DISTO™ transfer

## Troubleshooting with the Bluetooth driver

### ■ Solution 3:

- If Solution 1 and 2 are not solving the problem you have to uninstall the current driver

→ Control Panel → System → Device Manager → Bluetooth (double click)



# Leica DISTO™ transfer

## Troubleshooting with the Bluetooth driver

- **Solution 3 (cont.):**

- Make sure that the Bluetooth hardware on your computer is active
- Restart your computer
- After the restart you will be informed that a new hardware has been found. You have to choose a driver that should be installed for this hardware. Please choose the standard driver that is recommended (will be the Microsoft Bluetooth stack).
- Start again to connect your computer with the Leica DISTO™ as described before

## Leica DISTO™ transfer

### Troubleshooting with the Bluetooth range

- The Bluetooth of your Leica DISTO™ is a class II. So a range of 0.3m - 10m and more is possible
- Below 0.3m and after 10m the connection can drop
- The maximum range of a Bluetooth connection depends on the range of the Leica DISTO™ and of the Bluetooth hardware in your computer. Since the Bluetooth hardware of the computer is very often a class III modul this range can be limited. In this case we recommend to use an external USB Bluetooth hardware of class II. Please make sure that you install the standard driver from Microsoft or Broadcom (Widcomm) so you will not experience problems later on.





# A lot of success in using your Leica DISTO™ with Bluetooth

In the case a problem exists and can not be solved as described in this presentation please send a request by email to [mtd-support@leica-geosystems.com](mailto:mtd-support@leica-geosystems.com)

- when it has to be **right**

***Leica***  
**Geosystems**